

# Commonmode Choke Coils for Interface Line

## MCT7050-A401

### Features

- Use of high-performance ferrite core for excellent high frequency Characteristics.
- Low height and small-size, reflow soldering SMD.
- Since high coupling, a high speed signal transmission is not attenuated.

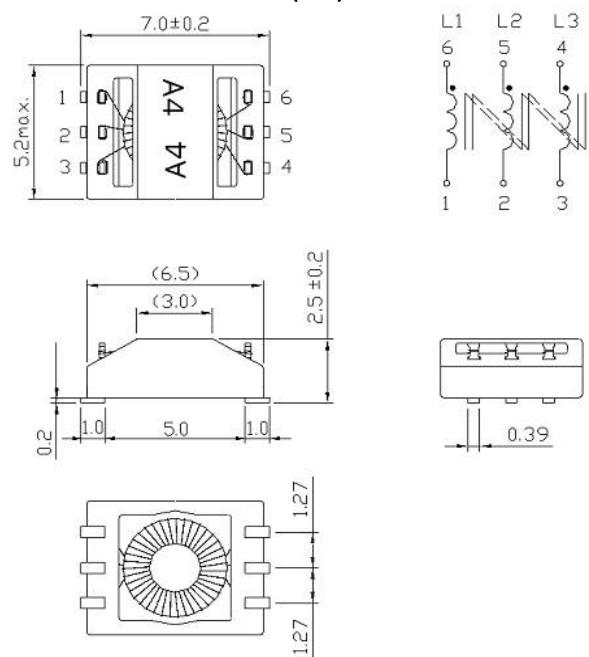
### Uses

- Preventive measure against "CC-Link", Conductive and Radiation emissions.
- Used for radiation noise suppression for any electronic devices.

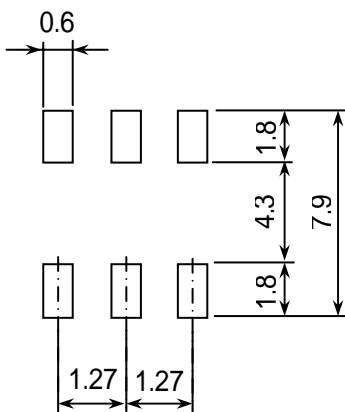
### Specifications

Rated Voltage: DC 50V  
 Rated Current : DC 0.5A  
 Impedance : 400 min.(50 ~ 300MHz)  
 DC Resistance : 300m max./Line  
 Thermal Class : 120 (Class E)  
 Temperature Rise : 35Kmax.(at Rated Current)  
 Insulating Resistance : DC100V 10M min. (Coil - Coil)  
 Hi-Pot Test : DC150V 1sec(Coil - Coil) Cutoff Current=1mA  
 Operating Temperature Rang : -25 ~ + 85  
 Storage Temperature Range : -40 ~ + 120

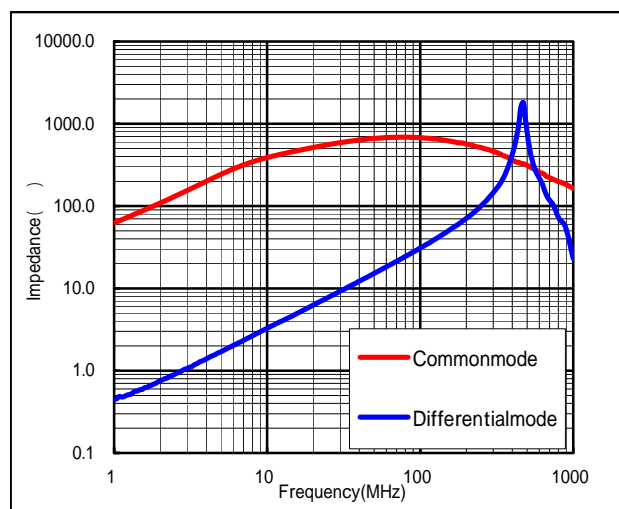
### Dimensions• Schematics(mm)



### Typical Land Pattern (mm, Top View)

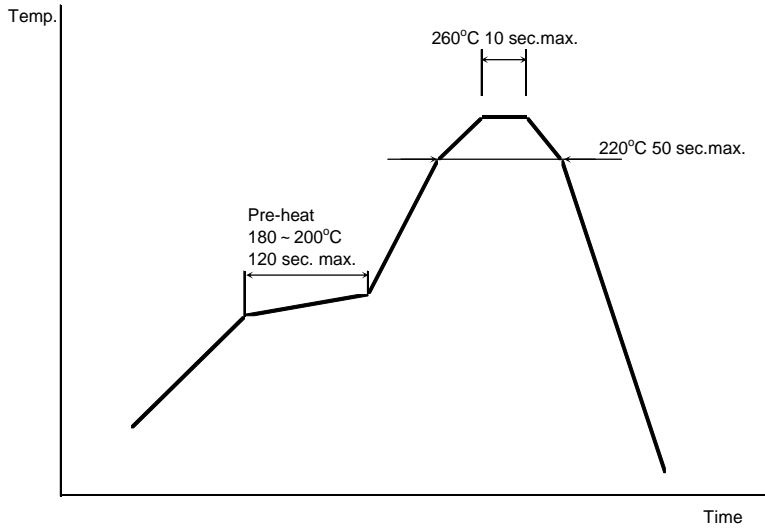


### Freq. vs Z Characteristics(Typical)



# MCT7050-A401

## Reflow Soldering Profile

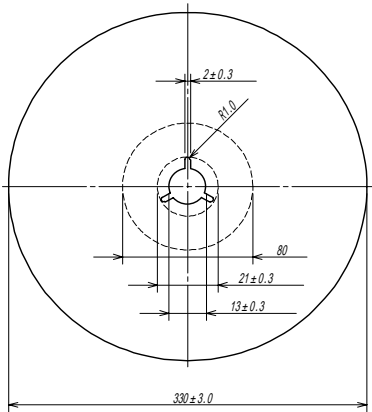


## Manual Soldering

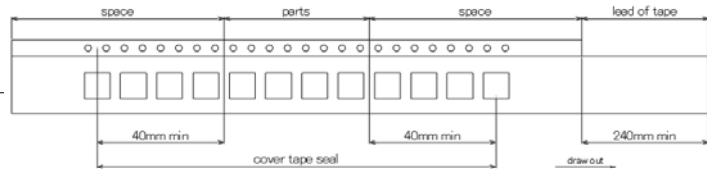
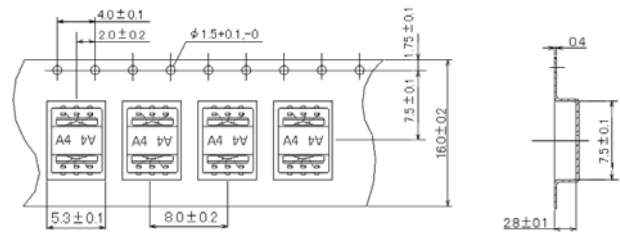
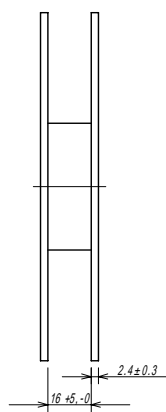
- Solder Iron Temperature :  $380 \pm 5$
- Soldering Time :  $3 \pm 1$  sec.

## Reel and Taping Dimension

(mm)



3000pcs/Reel



## Head Office

SINKA JAPAN CO., LTD.  
 SUMITOMO SEIMEI GOTANDA BLDG.1F,  
 5-21-15 HIGASHIGOTANDA, SHINAGAWA-KU,  
 TOKYO, JAPAN, 141-0032  
 TEL: 03-3491-5320  
 FAX: 03-3491-5323

## お問合せ先

信華株式会社  
 〒141-0032  
 東京都品川区大崎5-1-11  
 住友生命五反田ビル 1F  
 TEL: 03-3491-5320  
 FAX: 03-3491-5323