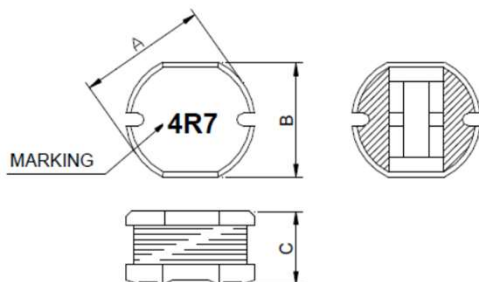


1. Features

1. Excellent solderability and high heat resistance.
2. Excellent terminal strength construction.
3. Packed in embossed carrier tape and can be used by automatic mounting machine.
4. 100% Lead(Pb) & Halogen-Free and RoHS compliant.

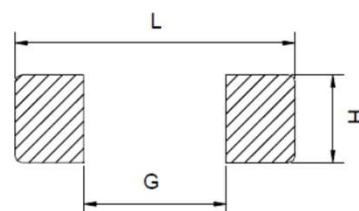


2. Dimension



Size	A(mm)	B(mm)	C(mm)
FPI 0403	4.50±0.3	4.00±0.3	3.20±0.3

Recommended Land pattern



L(mm)	G(mm)	H(mm)
5.0	1.5	4.5

3. Part Numbering

FPI
0403
BM
 -
 4R7
M

A
B
C
D
E

A: Series

B: Dimension

C: Lead free type

D: Inductance

E: Inductance Tolerance

Black marking

4R7=4.7uH

K=±10%, M=±20%

4. Specification

TAI-TECH Part Number	Inductance (μ H)	Tolerance (%)	Test Frequency (Hz)	DCR (Ω) max.	IDC (A) max.
FPI 0403BM-1R0M	1.0	$\pm 20\%$	1V/7.96M	0.03	4.00
FPI 0403BM-1R4M	1.4	$\pm 20\%$	1V/7.96M	0.04	3.50
FPI 0403BM-1R8M	1.8	$\pm 20\%$	1V/7.96M	0.05	3.00
FPI 0403BM-2R2M	2.2	$\pm 20\%$	1V/7.96M	0.06	2.60
FPI 0403BM-2R7M	2.7	$\pm 20\%$	1V/7.96M	0.06	2.20
FPI 0403BM-3R3M	3.3	$\pm 20\%$	1V/7.96M	0.07	2.00
FPI 0403BM-3R9M	3.9	$\pm 20\%$	1V/7.96M	0.07	2.00
FPI 0403BM-4R7M	4.7	$\pm 20\%$	1V/7.96M	0.08	1.90
FPI 0403BM-5R6M	5.6	$\pm 20\%$	1V/7.96M	0.12	1.80
FPI 0403BM-6R8M	6.8	$\pm 20\%$	1V/7.96M	0.14	1.60
FPI 0403BM-8R2M	8.2	$\pm 20\%$	1V/7.96M	0.15	1.40
FPI 0403BM-100M	10	$\pm 20\%$	1V/2.52M	0.19	1.10
FPI 0403BM-120M	12	$\pm 20\%$	1V/2.52M	0.21	1.10
FPI 0403BM-150M	15	$\pm 20\%$	1V/2.52M	0.25	1.00
FPI 0403BM-180M	18	$\pm 20\%$	1V/2.52M	0.30	1.00
FPI 0403BM-220M	22	$\pm 20\%$	1V/2.52M	0.35	1.00
FPI 0403BM-270M	27	$\pm 20\%$	1V/2.52M	0.45	0.75
FPI 0403BM-330M	33	$\pm 20\%$	1V/2.52M	0.60	0.70
FPI 0403BM-390M	39	$\pm 20\%$	1V/2.52M	0.70	0.65
FPI 0403BM-470M	47	$\pm 20\%$	1V/2.52M	0.80	0.60
FPI 0403BM-560M	56	$\pm 20\%$	1V/2.52M	0.85	0.55
FPI 0403BM-680M	68	$\pm 20\%$	1V/2.52M	1.00	0.50
FPI 0403BM-820M	82	$\pm 20\%$	1V/2.52M	1.10	0.46
FPI 0403BM-101M	100	$\pm 20\%$	1V/1K	1.20	0.22
FPI 0403BM-121M	120	$\pm 20\%$	1V/1K	1.60	0.20
FPI 0403BM-151M	150	$\pm 20\%$	1V/1K	2.00	0.20
FPI 0403BM-181M	180	$\pm 20\%$	1V/1K	3.00	0.20
FPI 0403BM-221M	220	$\pm 20\%$	1V/1K	3.00	0.20
FPI 0403BM-271M	270	$\pm 20\%$	1V/1K	4.00	0.16
FPI 0403BM-331M	330	$\pm 20\%$	1V/1K	4.00	0.14
FPI 0403BM-391M	390	$\pm 20\%$	1V/1K	5.00	0.12
FPI 0403BM-471M	470	$\pm 20\%$	1V/1K	6.00	0.12
FPI 0403BM-561M	560	$\pm 20\%$	1V/1K	7.00	0.10

Note:

Based on inductance change ($\Delta L/L0 : \leq -35\%$) @ ambient temp. 25°C

Based on temperature rise ($\Delta T : 40^\circ\text{C typ.}$)

SINKA JAPAN CO.,LTD