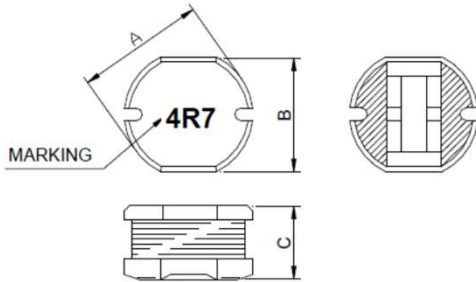


1. Features

1. Excellent solderability and high heat resistance.
2. Excellent terminal strength construction.
3. Packed in embossed carrier tape and can be used by automatic mounting machine.
4. 100% Lead(Pb) & Halogen-Free and RoHS compliant.

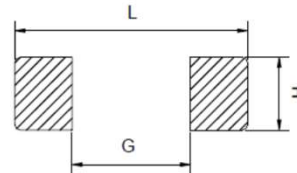


2. Dimension



Size	A(mm)	B(mm)	C(mm)
FPI 0302	3.50±0.3	3.00±0.3	2.10±0.3

Recommended Land pattern



L(mm)	G(mm)	H(mm)
3.7	1.1	3.3

3. Part Numbering

FPI **0302** **BM** - **4R7** **M**

A B C D E

- A: Series
 B: Dimension
 C: Lead free type Black marking
 D: Inductance 4R7=4.7uH
 E: Inductance Tolerance K=±10%, M=±20%

4. Specification

TAI-TECH Part Number	Inductance (uH)	Tolerance (%)	Test Frequency (Hz)	DCR (Ω) max.	IDC (A) max.
FPI 0302BM-1R0M	1.0	± 20%	1V/7.96M	0.04	1.50
FPI 0302BM-1R4M	1.4	± 20%	1V/7.96M	0.05	1.50
FPI 0302BM-1R8M	1.8	± 20%	1V/7.96M	0.06	0.80
FPI 0302BM-2R2M	2.2	± 20%	1V/7.96M	0.08	0.75
FPI 0302BM-2R7M	2.7	± 20%	1V/7.96M	0.10	0.75
FPI 0302BM-3R3M	3.3	± 20%	1V/7.96M	0.15	0.60
FPI 0302BM-3R9M	3.9	± 20%	1V/7.96M	0.20	0.50
FPI 0302BM-4R7M	4.7	± 20%	1V/7.96M	0.20	0.50
FPI 0302BM-5R6M	5.6	± 20%	1V/7.96M	0.23	0.45
FPI 0302BM-6R8M	6.8	± 20%	1V/7.96M	0.25	0.40
FPI 0302BM-8R2M	8.2	± 20%	1V/7.96M	0.30	0.40
FPI 0302BM-100M	10	± 20%	1V/2.52M	0.35	0.35
FPI 0302BM-120M	12	± 20%	1V/2.52M	0.40	0.35
FPI 0302BM-150M	15	± 20%	1V/2.52M	0.50	0.30
FPI 0302BM-180M	18	± 20%	1V/2.52M	0.55	0.30
FPI 0302BM-220M	22	± 20%	1V/2.52M	0.60	0.30
FPI 0302BM-270M	27	± 20%	1V/2.52M	0.70	0.30
FPI 0302BM-330M	33	± 20%	1V/2.52M	1.00	0.25
FPI 0302BM-390M	39	± 20%	1V/2.52M	1.20	0.25
FPI 0302BM-470M	47	± 20%	1V/2.52M	1.50	0.20
FPI 0302BM-560M	56	± 20%	1V/2.52M	1.80	0.20
FPI 0302BM-680M	68	± 20%	1V/2.52M	2.00	0.18
FPI 0302BM-820M	82	± 20%	1V/2.52M	2.50	0.16
FPI 0302BM-101M	100	± 20%	1V/1K	3.00	0.15
FPI 0302BM-121M	120	± 20%	1V/1K	3.50	0.14
FPI 0302BM-151M	150	± 20%	1V/1K	4.00	0.13
FPI 0302BM-181M	180	± 20%	1V/1K	5.00	0.12
FPI 0302BM-221M	220	± 20%	1V/1K	5.50	0.10
FPI 0302BM-271M	270	± 20%	1V/1K	6.00	0.10
FPI 0302BM-331M	330	± 20%	1V/1K	7.00	0.10
FPI 0302BM-391M	390	± 20%	1V/1K	8.00	0.10
FPI 0302BM-471M	470	± 20%	1V/1K	12.00	0.09

Note:

Based on inductance change ($\Delta L/L0$: $\leq -35\%$) @ ambient temp. 25°C

Based on temperature rise (ΔT : 40°C typ.)

SINKA JAPAN CO.,LTD